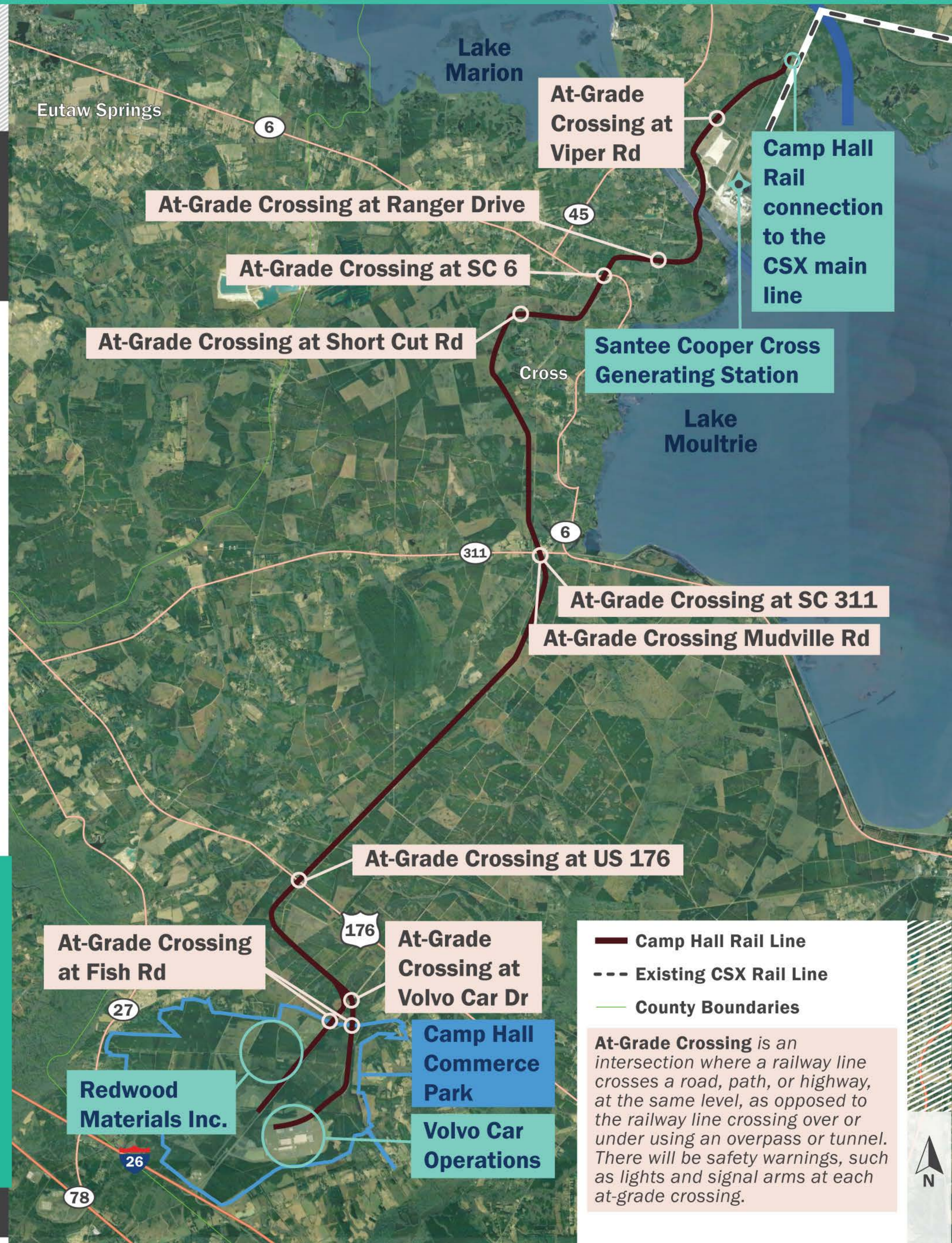


Welcome to Camp Hall Rail

Palmetto Railways is developing an industrial rail line to serve the Camp Hall Commerce Park in Berkeley County, South Carolina. The new rail line will connect the Camp Hall Commerce Park to the existing railroad right-of-way, near the Santee Cooper Cross Generating Station in Berkeley County.

Palmetto Railways will construct, own and operate the rail line.

THE CAMP HALL COMMERCE PARK IS A NEW, 6,800+ ACRE INDUSTRIAL PARK THAT OFFERS DESIGNATED SITES WITH SITE-READY INFRASTRUCTURE FOR BUSINESSES. THE DEVELOPMENT WITHIN THE COMMERCE PARK HAS INCREASED THE DEMAND FOR RAIL SERVICE TO INTERCONNECT THE COMMERCE PARK WITH SOUTH CAROLINA'S RAIL NETWORK.



- Camp Hall Rail Line
- - - Existing CSX Rail Line
- County Boundaries

At-Grade Crossing is an intersection where a railway line crosses a road, path, or highway, at the same level, as opposed to the railway line crossing over or under using an overpass or tunnel. There will be safety warnings, such as lights and signal arms at each at-grade crossing.



The new Camp Hall Rail line will provide the Camp Hall Commerce Park and other Berkeley County properties with access to a statewide rail network, helping to open the door to greater economic development efforts to support the State of South Carolina.

The project will bring numerous benefits to the surrounding community, including:

1



Access to major rail networks via CSX, the Class I freight carrier main line connection

2



Connectivity to the Port of Charleston

3



Support all phases of the Volvo Cars site

4



Ample capacity to serve current and future service needs of industries at the Camp Hall Commerce Park



Eutaw Springs

6

Lake Marion

Camp Hall Rail connection to the CSX main line

At-Grade Crossing at Viper Rd

Phase 2

45

Santee Cooper Cross Generating Station

At-Grade Crossing at Ranger Drive

At-Grade Crossing at Short Cut Rd

6

At-Grade Crossing at SC 6

Cross

Lake Moultrie

Phase 3

6

311

At-Grade Crossing at SC 311

At-Grade Crossing Mudville Rd

Phase 4

At-Grade Crossing at US 176

176

At-Grade Crossing at Fish Rd

27

Phase 5

At-Grade Crossing at Volvo Car Dr

Camp Hall Commerce Park

Phase 1

26

Camp Hall Rail Line
--- Existing CSX Rail Line



Camp Hall Rail Construction

The Camp Hall Rail project has entered the construction phase. Construction is set to begin in spring 2024 and anticipated to continue until spring 2026.

Camp Hall Rail construction is being completed in five phases. Phase 1 began at the Volvo Cars facility within the Camp Hall Commerce Park. This phase of construction is being completed entirely within the Commerce Park and does not impact the surrounding communities or roadways. Phase 1 is near complete.

The additional Camp Hall Rail construction activities will occur as follows:

Phase 2

This phase of the project makes initial connection to the existing Santee Cooper owned railroad track, which will in turn connect the Camp Hall Rail Line to the existing CSX rail network near the Santee Cooper Cross Generating Station. Phase 2 will include:

- A connection to existing railroad track made just south of Springwood Road
- Track installed adjacent to the existing track and moving south towards the future interchange yard (where CSX will exchange railcars with Palmetto Railways)
- A public at-grade crossing at Viper Road*
- Continued track moving south that will be raised to cross the Diversion Canal between Lake Marion and Lake Moultrie. This track will be constructed to provide full clearance to any boat traffic in the canal
- Concludes just before the Ranger Road at-grade crossing

*The at-grade crossing at Viper Road, along with all others, will have lights and gates providing notification of the passing trains. This crossing will be constructed in coordination with local and Santee Cooper representatives to ensure that access is never cut off to the Generating Station and neighborhoods at the end of Viper Road.

Phase 3

This phase of the project picks up just before the Ranger Road at-grade crossing. Phase 3 will include:

- Track installed at the Ranger Road at-grade crossing and moving west from the Blacks Camp area
- Track continuing west and south, crossing Old Highway 6 and Shortcut Road
- Community coordination on the scheduled public road crossings*

*Palmetto Railways is committed to coordinating with the community the construction schedule of the road crossings at Old Highway 6 and Shortcut Road. It also commits to ensuring that only one road crossing is detoured at the same time to limit the impacts on local traffic on the area.

Phase 4

This phase of the project continues southbound work to construct track. Phase 4 will include:

- Track installed moving south towards Highway 176 through the existing silviculture lands
- At-grade crossings at State Road 311 and Mudville Road
- Community coordination on the scheduled public road crossings*

*Palmetto Railways is committed to coordinating with the community to mitigate for impacts to travel near State Road 311 and Mudville Road.

Phase 5

The final phase of Camp Hall construction will connect the proposed track to the already constructed section of track within the Camp Hall Commerce Park. Phase 5 will include:

- Track connection to existing track at the Camp Hall Commerce Park (completed during phase 1)
- Two major roadway at-grade crossings on Highway 176 and Volvo Car Drive*

*Construction of the at-grade crossing at Highway 176 will be scheduled so that there are no impacts during hurricane season and to its evacuation route status.